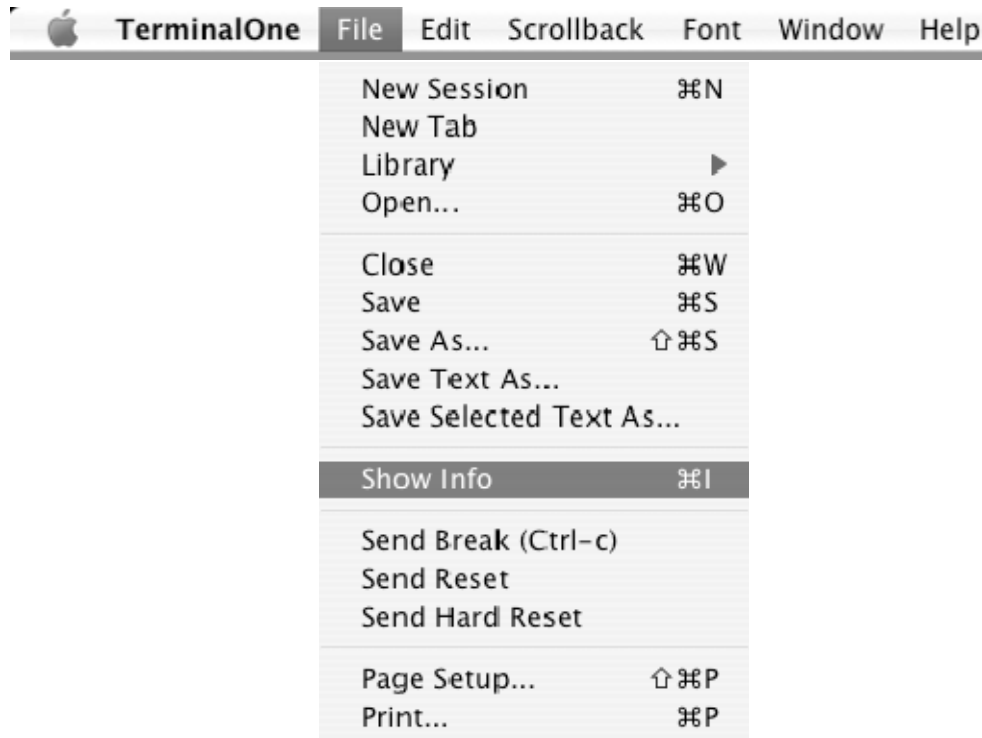
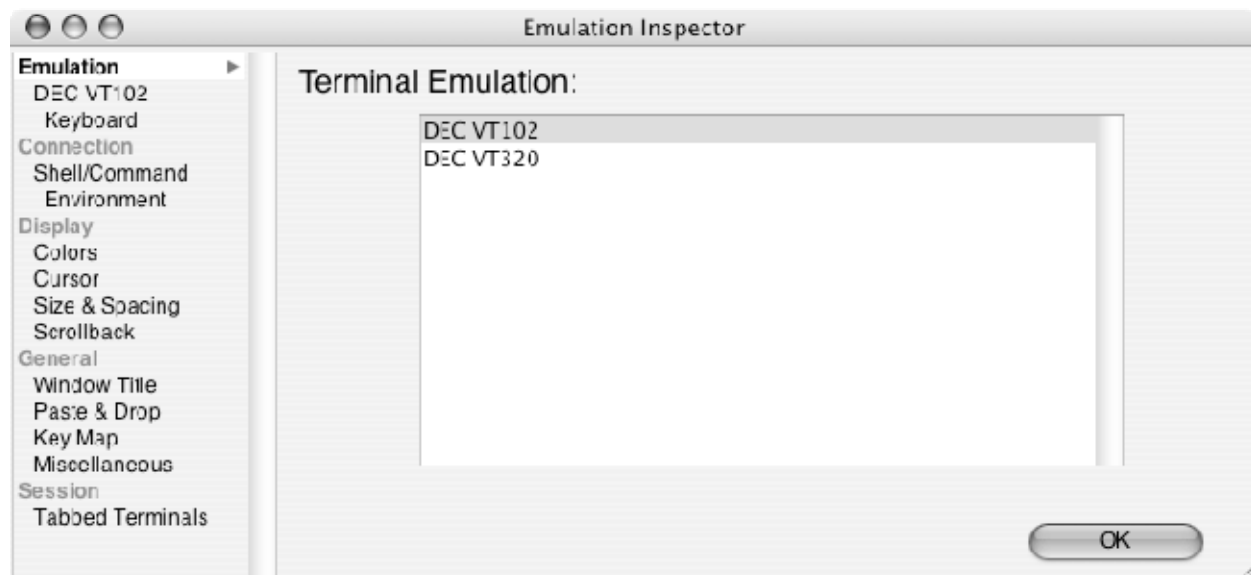


How to create and save a TerminalOne VT320 emulation session

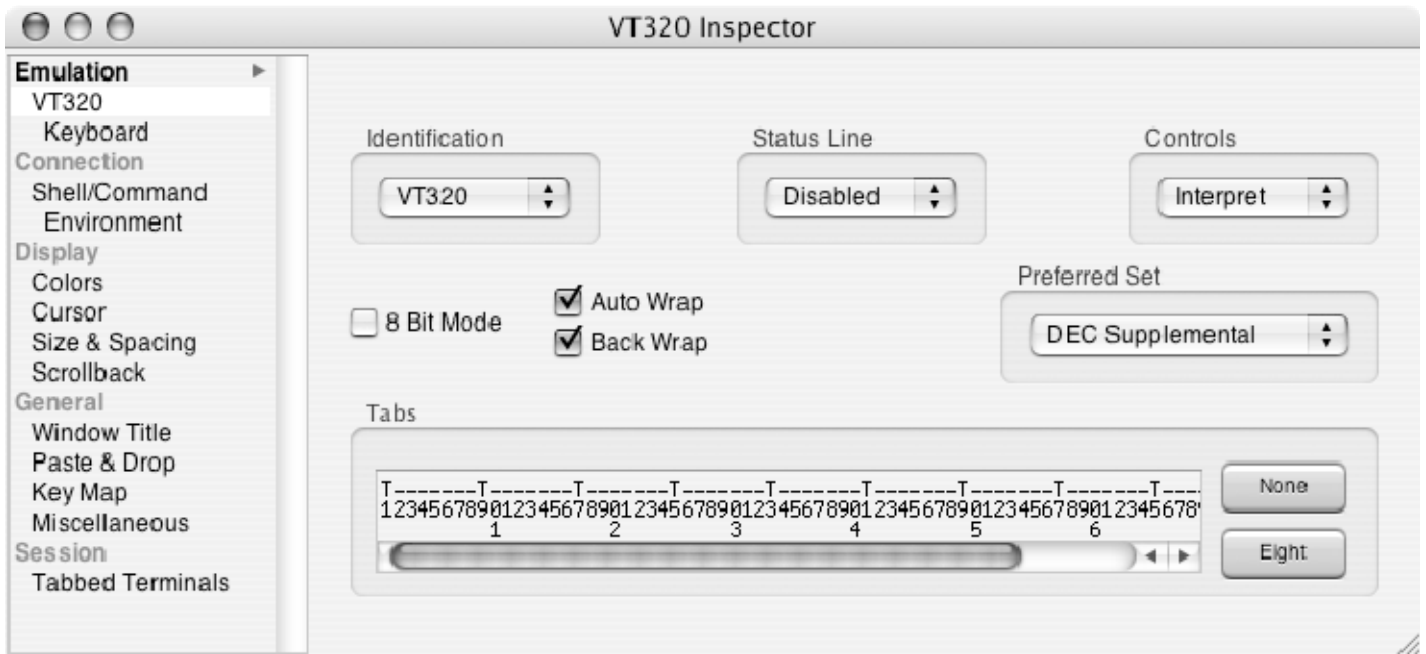
1. Start up TerminalOne
2. Click on the **Show Info ...** option in the File Menu to bring up TerminalOne's *Inspector*



3. Click on **Emulation** on the left hand side. This will bring up the *Emulation Inspector*



4. Select **VT320** and click **OK**. This will bring up the *VT320 Inspector*.



5. To set up the connection, select the **Shell/Command** option under Connection on the left-side to bring up the *Shell/Command Inspector*.



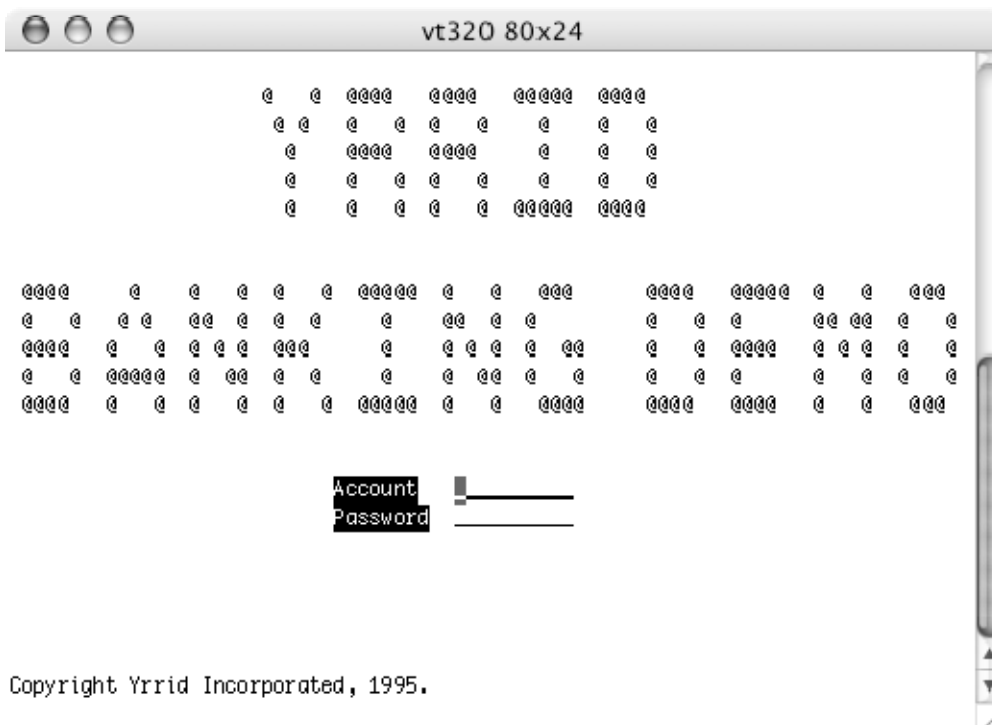
6. Click **Disconnect** to make the Command field editable. We will now connect, via telnet, to a VT320 terminal application running on the host *myhost*. Type:

/usr/bin/telnet myhost

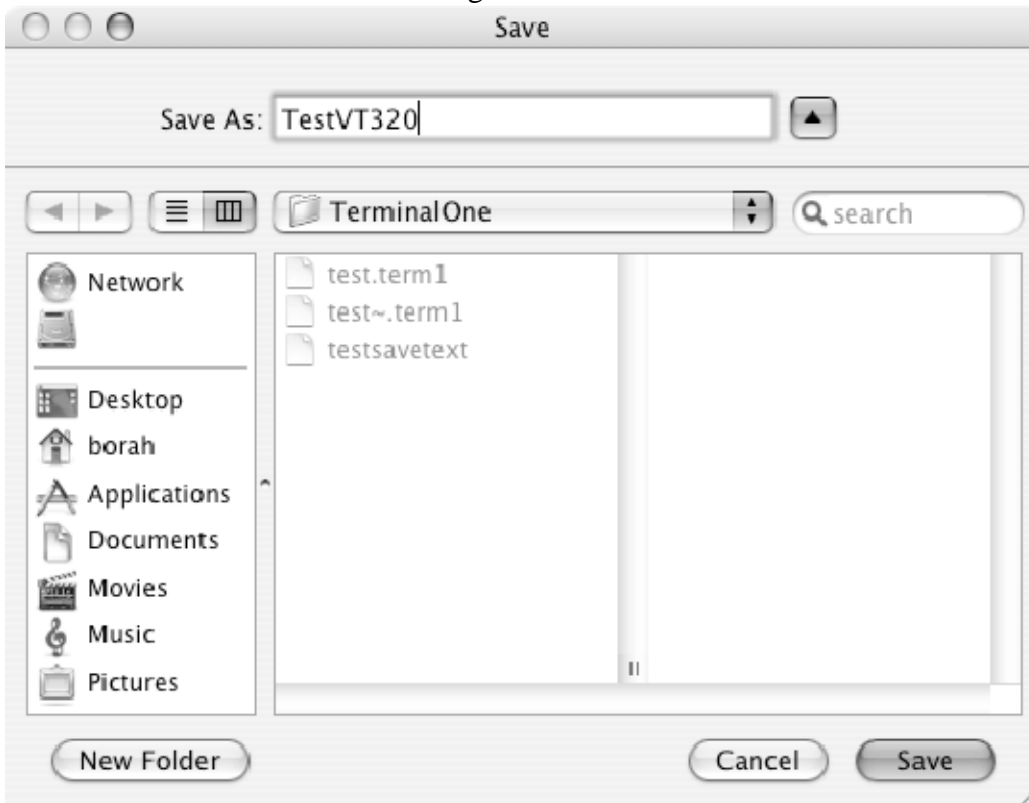
in the command textfield and **hit enter**. Then click the **Connect** button.



The terminal will attempt to connect to the host *myhost*:



7. Save the Session. Click on File -> Save to save the terminal session. This will bring up the Save window. Select a name for the configuration:



8. Open up a TestVT320 session. Select File -> Library -> TestVT320. A TerminalOne VT320 terminal session window should open and connect via telnet to the specified host.

